

Client/Server Messaging System v3.28

Installation Guide

1.	INTRODUCTION	3
1.1	The Messaging Server.....	3
1.2	The Messaging Client.....	3
2.	INSTALLING THE MESSAGING SERVER.....	3
2.1	Running the install program.....	3
2.1.1	CD-ROM	3
2.1.2	Internet.....	3
2.1.3	Reboot.....	3
2.2	Running the Messaging Server for the first time	3
2.2.1	Database Location	4
2.2.2	Network Configuration	5
2.2.3	Default System Administrator	5
3.	INSTALLING THE MESSAGING CLIENT.....	7
3.1	Running the install program.....	7
3.1.1	CD-ROM	7
3.1.2	Internet.....	7
3.2	Running the Messaging Client for the first time	7
4.	APPENDIX A – REQUIRED FILES	9
4.1	Operating Systems Supported	9
4.1.1	Windows NT 4.0.....	9
4.1.2	Windows 98.....	10
4.1.3	Windows 95.....	10
4.2	Installing Microsoft 32bit ODBC drivers.....	10
4.2.1	What version is installed on your computer?	10
4.2.2	Installing the latest 32bit ODBC Drivers.....	11
4.3	The Infolink Receiver	11
4.3.1	Installing the Infolink Receiver	11
4.4	Document Viewers	11

1. Introduction

This document describes how to install and perform basic configuration of the Messaging Server and Client applications.

You are referred to the more documents available in the Docs directory of the CD-ROM or under the install directory (after installation is complete) for more detailed documentation on how to configure and manage the Messaging System.

1.1 The Messaging Server

The Messaging Server is a Microsoft Windows 32-bit application that will operate under Windows NT 4.0 Server and Workstation operating systems.

You may be required to install additional support files before the Messaging Server can be installed. **See Appendix A – Required Files** for a list of the required files.

1.2 The Messaging Client

The Messaging client is a Microsoft Windows 32-bit application that will operate under the Windows 95, Windows 98 and Windows NT 4.0 operating systems.

You may be required to install additional support files before the Messaging Client can be installed. **See Appendix A – Required Files** for a list of the required files.

2. Installing the Messaging Server

The installation file for the Messaging Server is a 32-bit InstallShield™ program that is usually distributed via download from the Internet or on CD-ROM.

2.1 Running the install program

2.1.1 CD-ROM

To install the Messaging Server, select the Start button, then Run and enter the location of the Paging Server: X:\server\PageLinkSvr.exe (where X is the drive letter of your CD-ROM drive).

2.1.2 Internet

You can download the installation programs for the Paging Server and Paging Client from the following locations:

PageOne	–	PageLinkII
Available from the PageOne web site http://www.pageone.co.uk		
Rio	Paging	Server
Available from the Connection Software web site http://www.csoft.co.uk		

Download the installation executable (usually called PageLinkSvr.exe) on to your system, and run it from there. It is not advisable to run it over the Internet.

2.1.3 Reboot

After installing the Server software, you will be prompted to reboot the system. You may wish to install other software before doing this (such as the Client) but you must reboot before starting up the server (this will auto-start on login after rebooting).

2.2 Running the Messaging Server for the first time

To run the Messaging Server select

Start Menu → Programs → Connection Software → Rio → Messaging Server

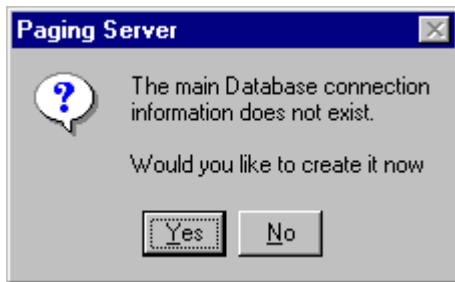
The Messaging Server will now run.

Because this is the first time that the Messaging Server has been run the following items will need to be specified.

- Database Location
- Network Configuration
- Default System Administrator

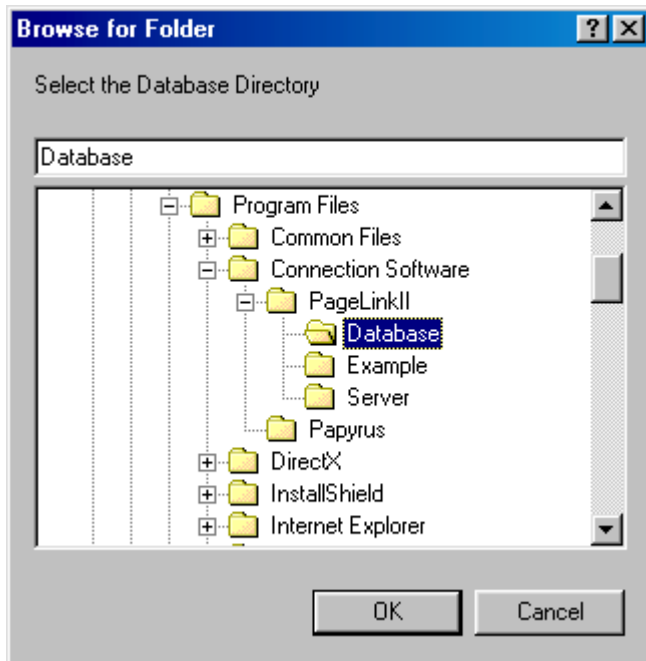
2.2.1 Database Location

The first time that the Messaging Server is run you will be presented with the following screen:



Select "Yes" (because you have not specified the main Database connection yet).

You will then be prompted to specify the location of the Messaging Database:



The usual paths to the Messaging Database will be

For
\\Program Files\\Connection Software\\PageLinkII\\Database

PageLinkII:

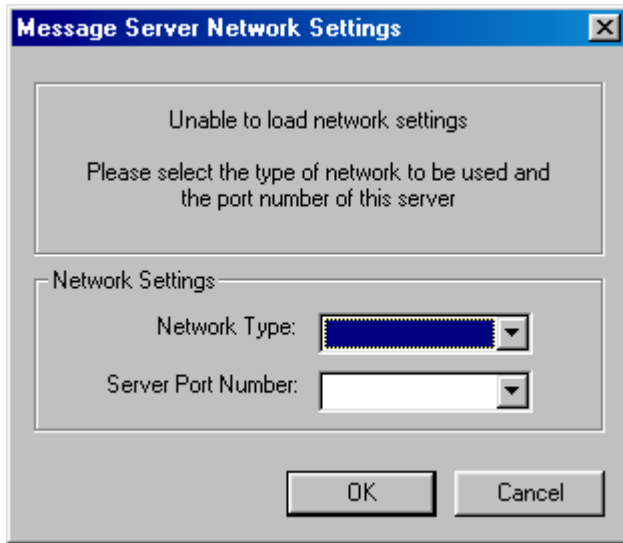
For
\\Program Files\\Connection Software\\Rio\\Database

Rio:

Browse to the correct path and press OK to continue.

2.2.2 Network Configuration

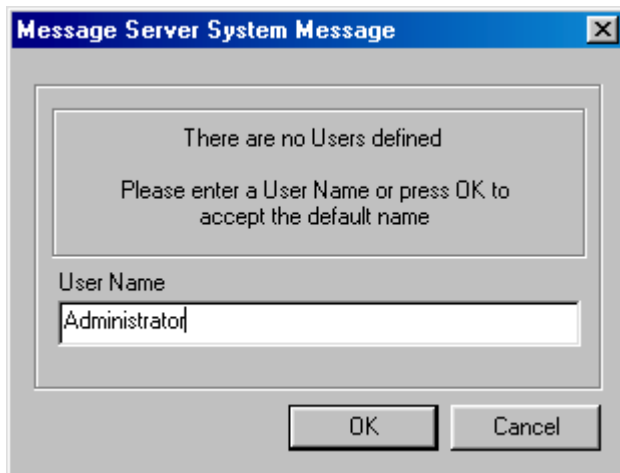
The Paging Server is able to function on both a TCP/IP and IPX/SPX network. You will be prompted to select the network type and port that the Server will accept paging client(s) connecting to:



If you only have one Paging Server on your network it is you are advised to set the Network port to 20000. The Paging Client will look for this port first when trying to auto-discover the Paging Server. If you select a different port, make a note of the number, as you may need it when setting up the Clients.

2.2.3 Default System Administrator

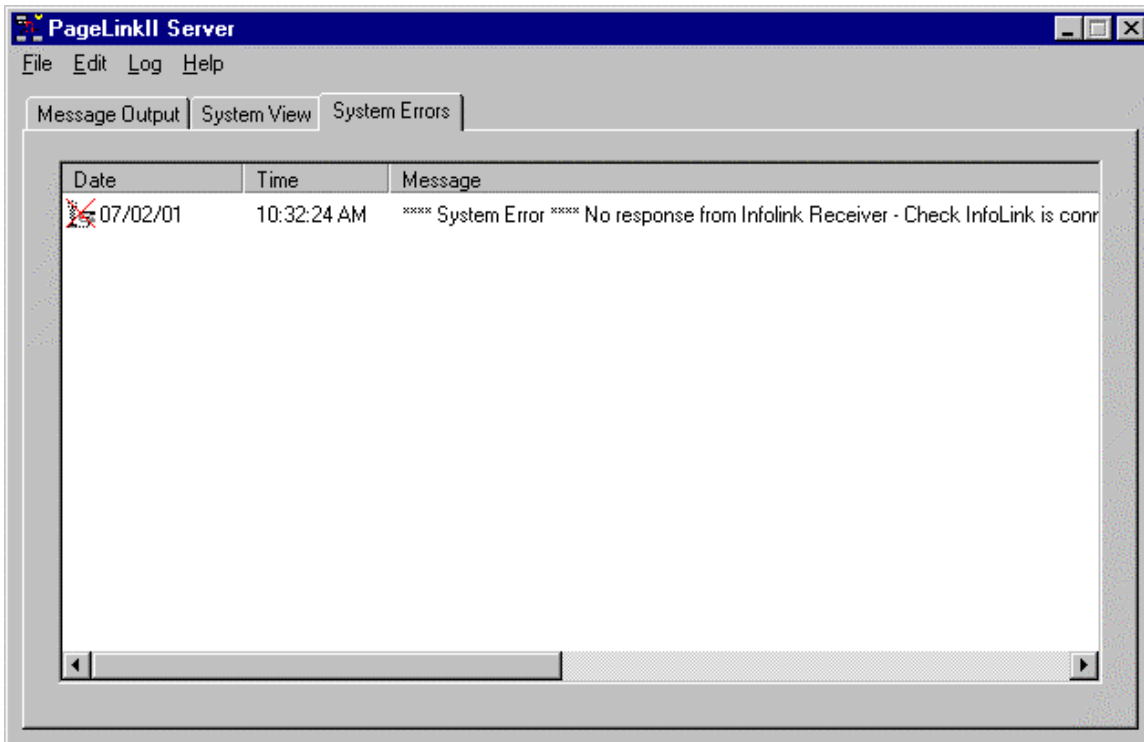
The Messaging Server checks to see if a System Administrator has been specified. If unable to locate a System Administrator you will be presented with the following screen:



You can either accept the name that is displayed or enter the name of the User that will be the System Administrator and then Press OK.

IMPORTANT NOTE: The name of the user **must be** the login id for the user. This user will be the only person at this stage that will have access to the Messaging system.

The server will then complete start-up and present you with a main screen that will look something like that shown below. Infolink related errors are to be expected whilst the Infolink has not been configured.



For further information on the configuring of the Paging Server please read the System Administrators Guide (called manager.doc) located in the DOCS directory of the installation CD-ROM and installed in the default location:

PageLinkII

C:\Program Files\Connection Software\PageLinkII\Server\

Rio

C:\Program Files\Connection Software\Rio\Server\

3. Installing the Messaging Client

3.1 Running the install program

3.1.1 CD-ROM

To load the client application select the Start button, then Run and enter location of the Paging Client: X:\client\PageLinkII.exe (where X is the drive letter of your CD-ROM drive).

3.1.2 Internet

In order to obtain the Rio Client programs for installation, you will need to download the installation programs for the Messaging Client from the following locations:

PageOne	–	PageLinkII
Available from the PageOne web site http://www.pageone.co.uk		
Rio	Paging	Client
Available from the Connection Software web site http://www.csoft.co.uk		

3.2 Running the Messaging Client for the first time

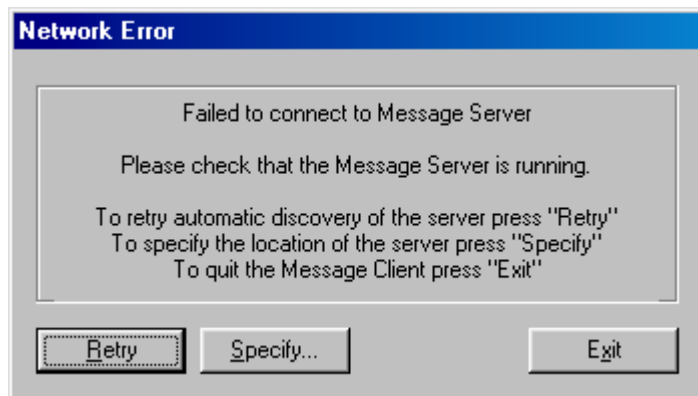
To run the Messaging Client select

Start → Programs → Connection Software → Rio → Messaging Client

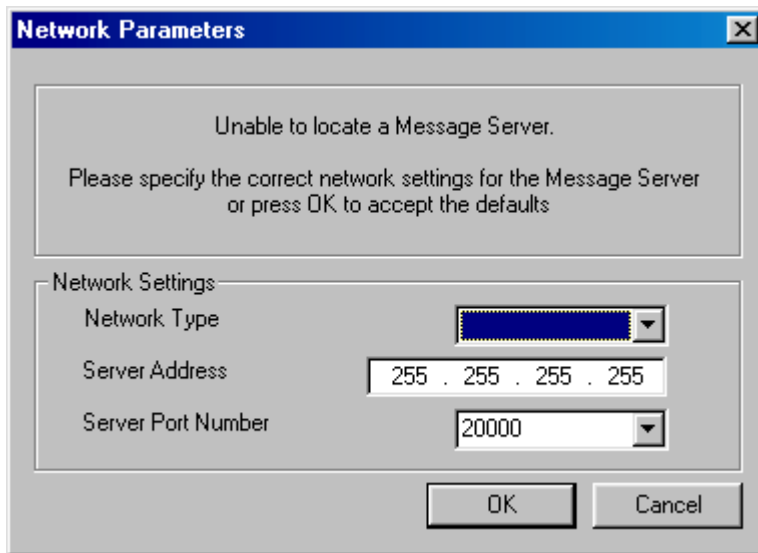
The Messaging Client will now run.

During the start-up the Messaging Client will attempt to auto-detect the location of the Messaging Server. If the Client is able to locate the server it will connect to the server, and load normally.

If, however, the Client is unable to locate the Server (such as because you chose a different Port number during the Server set-up), the following screen will be displayed:



You have the option of either retrying the auto-detection of the Server or specifying the address of manually. If you choose to specify the location of the Messaging Server manually the following screen will be displayed:



On this screen you will need to specify the Network type, the Network Address and the Network port to be used to connect to the Messaging Server. If you did not configure the messaging Server then you will need to contact the person who did for these details.

The Client will continue to use this configuration unless it is unable to locate the Messaging Server.

4. Appendix A – Required Files

In order to ensure that the operating system and its drivers are able to support the Messaging Server and Client the following files are required. Note that the download locations mentioned are correct at the time of going to press, but that since these locations are not under the control of the author, they are subject to change. If you cannot find the specified location, then you are advised to try <http://www.microsoft.com> and use the search facility.

4.1 Operating Systems Supported

The Server must be installed on a Windows NT 4 Server or Workstation system. Installation on any other system is not supported at this time.

The Client can be installed on a Windows 95, 98 or NT 4.0 system.

Note that at the present time, neither program is supported under Windows NT 3.1, Windows 2000, Windows Me, or Windows XP.

4.1.1 Windows NT 4.0

The minimum requirements for running the Server on Windows NT 4.0 are as follows:

- Windows NT Workstation or Server Version 4.00.1318
- Service Pack 4.0 or greater
- MDAC 2.1 RTM Installed
- About 15MB of free hard disk space
- Connection to the same network that the clients will be on using either TCP/IP or IPX/SPX.
- An modem if you wish to use dial up connections to the Service Provider
- A free serial port to connect the Infolink Receiver.
- A permanent Internet connection if you wish to use Internet connections to the Service Provider

The Server should not be located in a basement if a radio receiver is attached (the Infolink) and reasonable radio reception is required. If your normal Cell/Mobile phone or Beeper/Pager work in the room then so will the Infolink Receiver. If in doubt be sure to test the Receiver thoroughly before the system goes live.

Product	Filename	Download Location
Windows NT Service Pack 4.0		http://www.microsoft.com
Microsoft Universal Data Access Components MDAC 2.1 RTM	Mdac_typ.exe	http://www.microsoft.com/data/download.htm

4.1.2 Windows 98

4.1.2.1 Client

Product	Filename	Download Location
Windows 98 Service Pack 1		http://www.microsoft.com/windows98/downloads/

4.1.3 Windows 95

4.1.3.1 Client

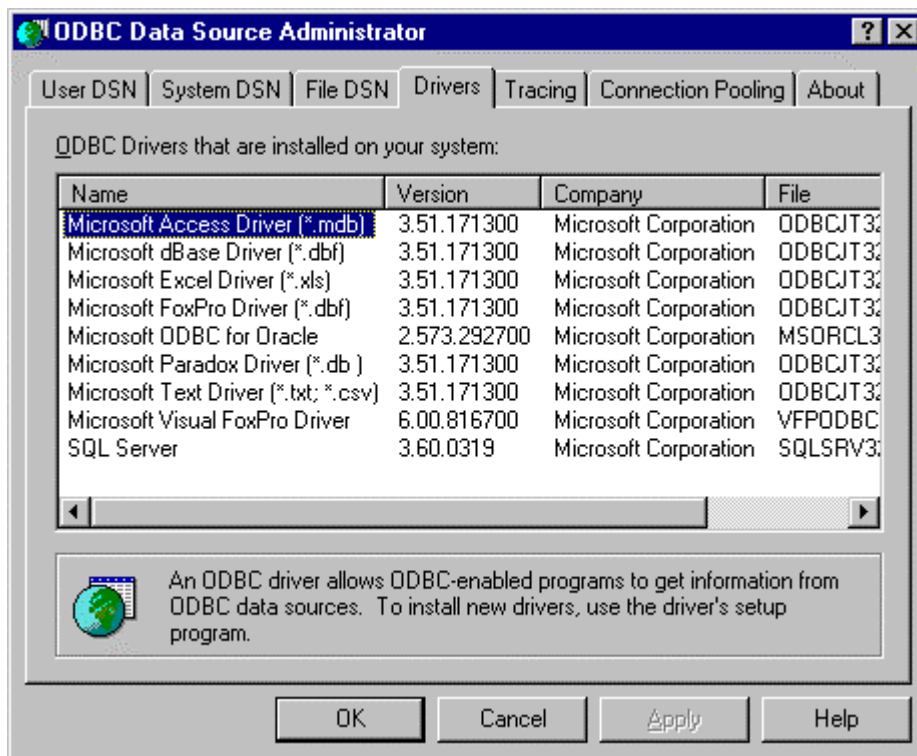
Product	Filename	Download Location
Common Controls Update	40compud.exe	http://www.microsoft.com/windows95/downloads/
Windows 95 Service Pack	Win95-sp1.exe	http://www.microsoft.com/windows95/downloads/

4.2 Installing Microsoft 32bit ODBC drivers

If you wish, you can first determine which release of the ODBC drivers is installed on your computer and then decide whether or not to do the upgrade.

The “quick route” is to install the latest ODBC drivers. These are supplied with the Rio distribution. This is highly recommended – the supplied drivers are complete and stable.

4.2.1 What version is installed on your computer?



You can determine which version of the Microsoft 32bit ODBC drivers you have, as follows.

- ◆ Run the Control Panel.
- ◆ Open the ODBC application – if there is no ODBC icon then you do not have ODBC installed and you will need to install it from the supplied disk.
- ◆ Select Drivers
- ◆ Select Microsoft Access Driver (*.mdb) – if this option is not displayed then you will need to Add the driver at this point. Press the Add button and follow the instructions given on the screen.
- ◆ Read the Version Number of the Microsoft Access Driver.

The Version Number of the Microsoft Access Driver must be at least 3.50 for correct operation. If it is, for example, 3.50.342800 dated 12 September 1997 then you need not upgrade. However the

supplied ODBC driver upgrade provides new interfaces and you may well choose to install this latest version in any case. **If in doubt – upgrade!**

Close all the ODBC windows and the Control Panel

4.2.2 Installing the latest 32bit ODBC Drivers

The 32bit ODBC Drivers will be provided as either

- ◆ A single file called `mdac_typ.exe` from a CD distribution or Internet download. Execute this program.

OR

- ◆ A group of files on four floppy disks. Run the `setup.exe` program from the floppy distribution set.

This program is referred to internally as the `Microsoft Data Access Component Pack`. Run it to install the new Data Access Drivers.

You must restart your computer after installing this update – even though it does not tell you to do so.

4.3 The Infolink Receiver

The Infolink Receiver must be connected to a serial port on the Server. If necessary the Server configuration must be changed to indicate which port the Infolink Receiver is connected to.

The Infolink Receiver is used to receive :

- ◆ Reply Requested Messages
- ◆ System Configuration and test Messages.

4.3.1 Installing the Infolink Receiver

The Infolink Receiver is supplied with a special cable. Connect the 9-pin DIN plug on one of the cable to the 9-pin socket on the Infolink receiver. The socket is marked “DTE”.

Connect the other end of the cable to a free serial port on the Server. The cable has both 9-pin and 25-pin connectors and you can use either to connect to the COM port.

Make a note of the COM port that you have plugged the Infolink Receiver into. This will probably be COM1 or COM2. After you have installed the Server software you will need to tell it which port you have connected the Infolink Receiver to.

Position the Infolink Receiver as far as possible, and at least 1 metre away, from any monitor or computer.

4.4 Document Viewers

In order to view the documents included as part of this system you will need the following document viewers;

Document Extension	Application	Download
.doc	Microsoft Word or Microsoft Word Viewer	http://www.microsoft.com
.pdf	Adobe Acrobat or Abobe Acrobat Viewer	http://www.adobe.com